

# IRIS<sup>®</sup>

## IP65 IRIS UNISCAN APPLICATION MANUAL

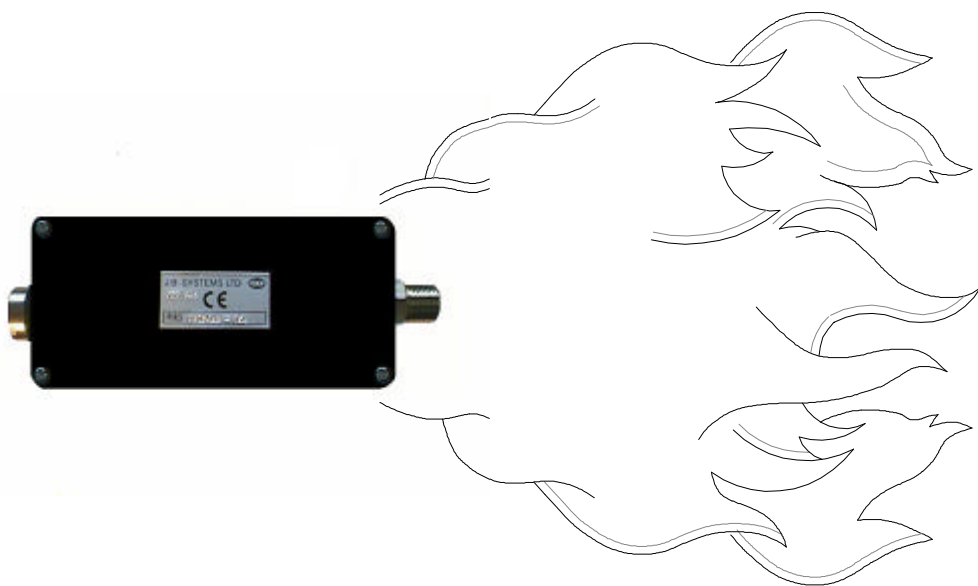


TABLE OF CONTENTS

<b>DESCRIPTION</b>	<b>PAGE</b>
<b>IRIS - UNISCAN</b> .....	<b>1</b>
SPECIFICATION.....	1
<i>SUPPLY VOLTAGE</i> : -.....	1
<i>OUTPUTS</i> : -.....	1
<i>TRANSMISSION</i> : -.....	1
<i>CABLE</i> : -.....	1
<i>FLAME DROP OUT TIME</i> : -.....	1
<i>DISCRIMINATION CUT-OFF FREQUENCIES</i> : -.....	1
<i>ACCESSORIES</i> : -.....	1
DESCRIPTION.....	1
<b>IRIS UNISCAN - INSTALLATION &amp; COMMISSIONING INSTRUCTIONS</b> .....	<b>1</b>
<i>INSTALLATION</i> .....	1
<i>WIRING</i> .....	1
<i>IMPORTANT</i> .....	1
<i>SETTINGS</i> .....	1
SETTING UP PROCEDURE.....	2
SIGHTING (SEE FIG. 4).....	2

LIST OF FIGURES

FIGURE 1	IRIS UNISCAN – POWER SUPPLY MODULE DIN RAIL MOUNTED	2
FIGURE 2	IRIS UNISCAN – PCB BOARD AND DETECTOR HEAD ASSEMBLY	3
FIGURE 3	IRIS UNISCAN – WIRING CONNECTION-SYSTEM ASSEMBLY	4
FIGURE 4	IRIS UNISCAN – UNISCAN HEAD SIGHTING	5

## **IRIS - UNISCAN**

The Uniscan is a fail safe - self check flame monitor and amplifier mounted in one enclosure, suitable for gas or oil, pilot or main flame monitoring. The techniques used for discrimination and fail safety are unique and are covered by UK patent No. 2131585 and US patent No. 4540886.

### **SPECIFICATION**

#### ***SUPPLY VOLTAGE:-***

24V DC + 10% - 25% (separate module available with 110V AC primary and 20V DC secondary - see accessories).

#### ***OUTPUTS:-***

One normally open volt powered 20V DC contact for flame on (SPST). One 4-20mA output for flame strength indication.

#### ***TRANSMISSION:-***

No limit providing supply cable is sized correctly.

#### ***CABLE:-***

4 core 1.0mm<sup>2</sup> Controlflex SY with outer braid.

#### ***FLAME DROP OUT TIME:-***

Selectable to 1, 2 or 3 seconds (factory set at 2 seconds)

#### ***DISCRIMINATION CUT-OFF FREQUENCIES:-***

Selectable POS 1 = 36 Hz  
POS 2 = 71 Hz  
POS 3 = 105 Hz  
POS 4 = 186 Hz  
(factory set at POS 1)

#### ***SPECTRAL RESPONSE OF CELL:-***

For Oil Only 200-1080nm S1411

For Gas and Oil 750 - 1900nm B 1818

***DIMENSIONS:-*** 175 x 52 x 80mm

***WEIGHT:-*** 825 grams

***PROTECTION CLASS:-*** IP 65

***MAXIMUM OPERATING TEMPERATURE:-*** 70 °C

***MOUNTING:-*** 1/2" BSP

#### ***ACCESSORIES:-***

Din rail mounting power supply module (Fig.1).

- Input – 110-120/220-240V AC ±10%

- Output - 20V DC
- LED Indications of DC power on and flame on

### **DESCRIPTION.**

The IRIS Uniscan flame monitor has been developed to satisfy the process heater and smaller utilities market, where the sophisticated discrimination techniques are not required.

The Uniscan however, offers certain adjustments, for discrimination purposes and flame drop out time.

The unique feature of the system is that all the electronics are situated in the viewing head - thus saving valuable panel space and expensive special cabling.

As the power regulation within the system is capable of a wide operating voltage range, 18V to 27V; losses due to long cable runs to the boiler front have little effect on the performance of the system.

The flame on signal is 20V DC (nominal) at a high milliampere level - and is therefore unaffected by site electrical noise and transients.

The electronics are housed in a cast aluminium case giving protection to IP65 (Fig. 2).

The unit should be mounted as near parallel to the axis of the burner as is practical, looking into the primary combustion zone of the flame (see Fig. 4).

### **IRIS UNISCAN - INSTALLATION & COMMISSIONING INSTRUCTIONS**

#### ***INSTALLATION***

The sighting position should be such that the viewing head is looking into the root of the flame - as near parallel to the axis of the burner as possible (see Fig. 4). Cooling air at a minimum rate of 1 CFM (1.7m<sup>3</sup>/h) should be provided by tee-ing into the sight tube.

#### ***WIRING***

There is a 5-pin Amphenol plug (Fig. 3) which must be removed to facilitate wiring. Wire should be Controlflex 4 core with outer braid. The braid is used as the 5<sup>th</sup> core.

Providing the wire is sized correctly, there is no upper limit to transmission distance. The nominal supply voltage to the head is 20V DC.

This can vary between 16V and 27V without detriment to the performance.

#### ***IMPORTANT***

The housing must be earthed according to local regulations.

#### ***SETTINGS***

Flame drop out: -

1, 2 or 3 seconds – factory supplied at 2 seconds

Discrimination Selector: -

1, 2, 3 or 4 positions – factory supplied at 1

Flame sensitivity: -

25 turns - clockwise to increase - factory set at 12.

Should be set to flame on signal strength on meter between 15 - 20mA.

To vary these settings it is necessary to remove the cover from the housing (see Fig. 2).

**SETTING UP PROCEDURE.**

1. With the subject flame off, turn the 25 turn potentiometer (Fig. 2) clockwise to increase the gain, but not so far that the unit indicates flame on. Place the discrimination switch in POS.1 (Fig. 2).

2. Ignite the burner and bring up to normal firing. Adjust the gain so that the meter reading is approx. 15mA.

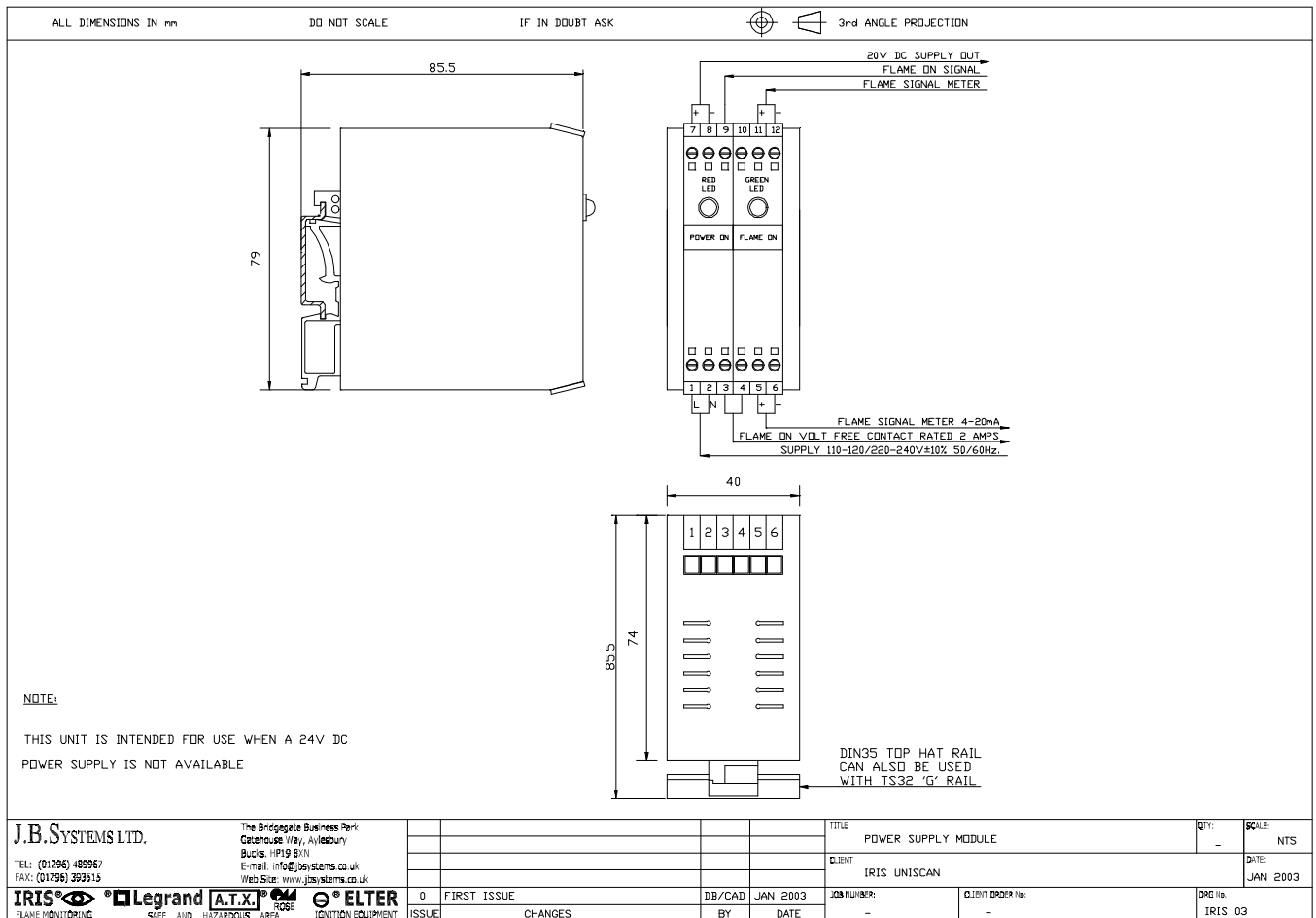
3. Extinguish the flame and note the meter reading. If it is greater than 3mA with flame off, place the discrimination switch into POS.2.

4. Repeat paragraph's 2 & 3, placing the discrimination switch into positions 3 & 4 if necessary until the best differential between flame on and flame off is achieved.

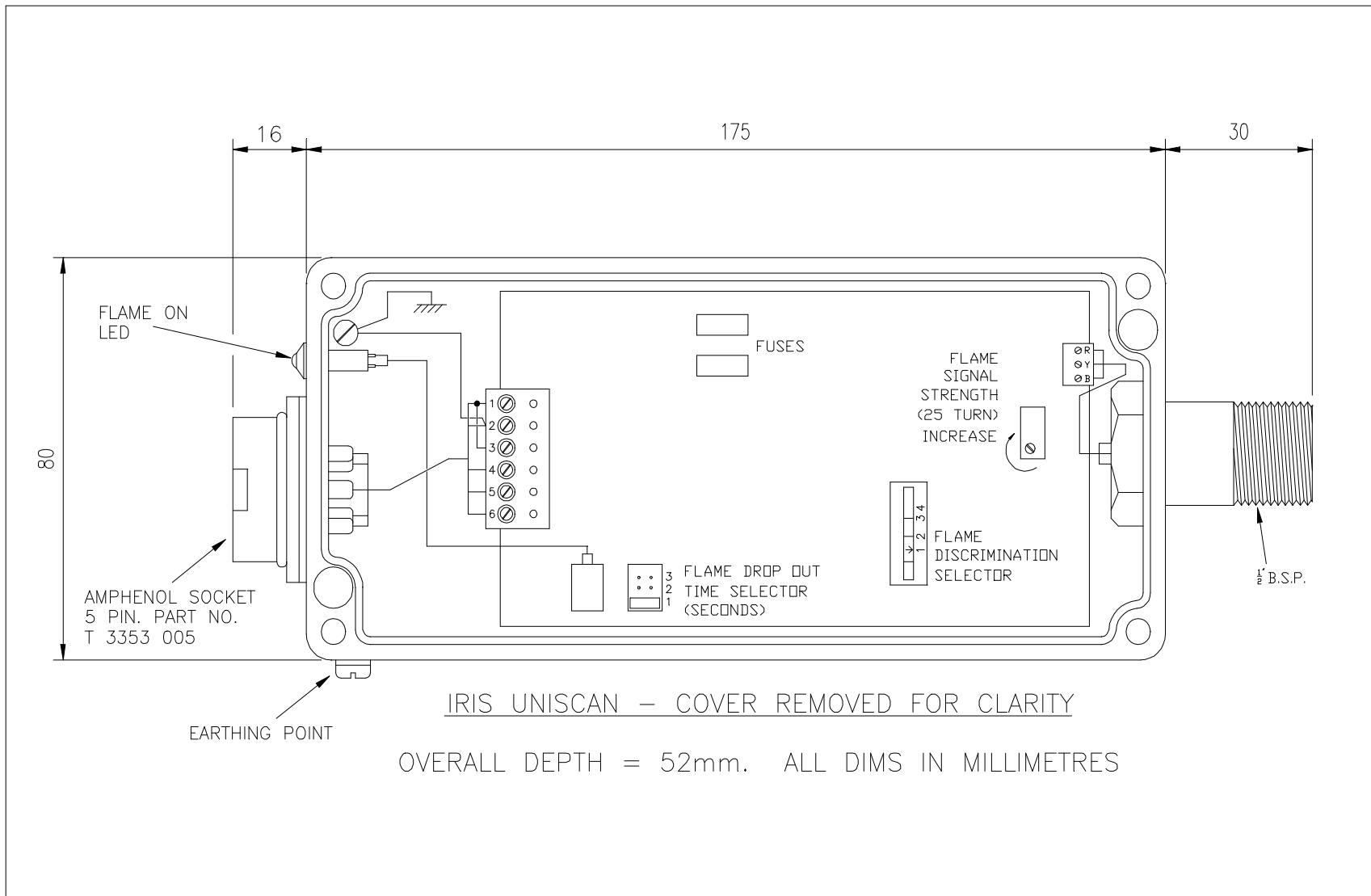
5. On difficult applications it may be necessary to re-sight the viewing head slightly so that the flame on reading is slightly lower, but a greater differential between flame on and flame off is achieved.

**SIGHTING (See Fig. 4)**

The first 30% of the flame, the root, radiates the most intense ultraviolet and high frequency infra-red emissions. Sighting along the flame rather than across it permits the Uniscan to view a greater depth of the flame root, obtain a higher signal and help eliminate nuisance trips due to flame movement or adjacent flame activity.



**Fig. 1 POWER SUPPLY MODULE DIN RAIL MOUNTED**

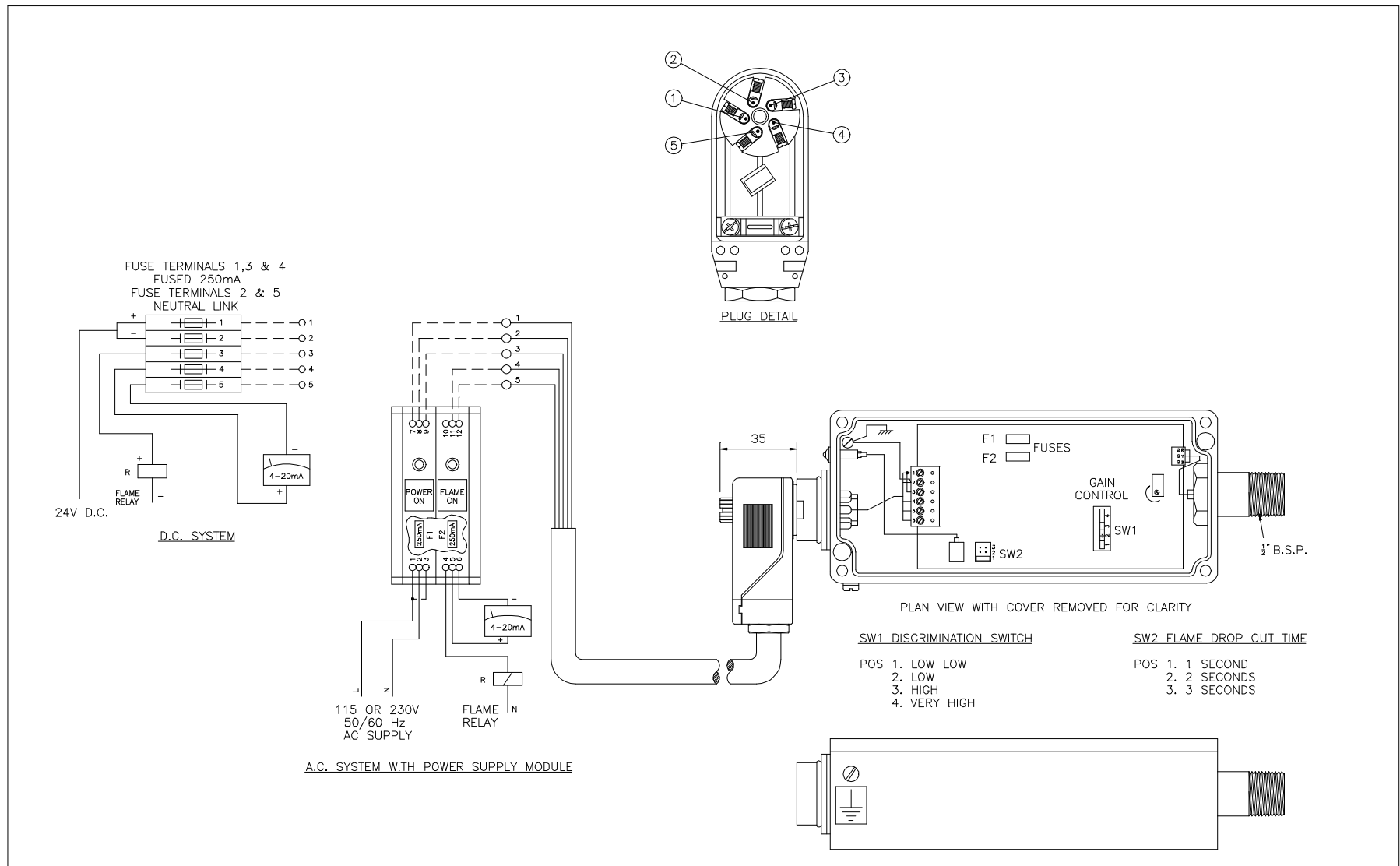


IRIS UNISCAN - COVER REMOVED FOR CLARITY

OVERALL DEPTH = 52mm. ALL DIMS IN MILLIMETRES

<b>J.B.SYSTEMS LTD.</b> The Bridgegate Business Park Gatehouse Way, Aylesbury Bucks. HP19 8XN E-mail: info@jbsystems.freeserve.co.uk Web Site: www.jbsystems.co.uk				TITLE DESIGN FEATURES CLIENT IRIS UNISCAN		QTY: - DATE: JAN 2003	SCALE: NTS	
TEL: (01296) 489967 FAX: (01296) 393515	IRIS® FLAME MONITORING	Legrand® SAFE AND HAZARDOUS AREA	A.T.X.® ROSE	ELTER® IGNITION EQUIPMENT	0 FIRST ISSUE ISSUE CHANGES	DB/CAD BY DATE	JAN 2003 JOB NUMBER: - CLIENT ORDER No: -	DRG No. IRIS 01

Fig. 2 PCB BOARD AND DETECTOR HEAD



<b>J.B. SYSTEMS LTD.</b> TEL: (01296) 489967 FAX: (01296) 393515		The Bridgegate Business Park Gatehouse Way, Aylesbury Bucks. HP19 8XN E-mail: info@jbsystems.co.uk Web Site: www.jbsystems.co.uk		TITLE SYSTEM WIRING		QTY: -	SCALE: NTS
<b>IRIS</b> FLAME MONITORING		<b>Legrand</b> SAFE AND HAZARDOUS AREA		<b>A.T.X.</b> ROSE IGNITION EQUIPMENT		DATE: JAN 2003	
0 FIRST ISSUE ISSUE		--/CAD -- CHANGES		JOB NUMBER: -		CLIENT ORDER No: -	
						DRG No. IRIS 02	

Fig. 3 SYSTEM ASSEMBLY

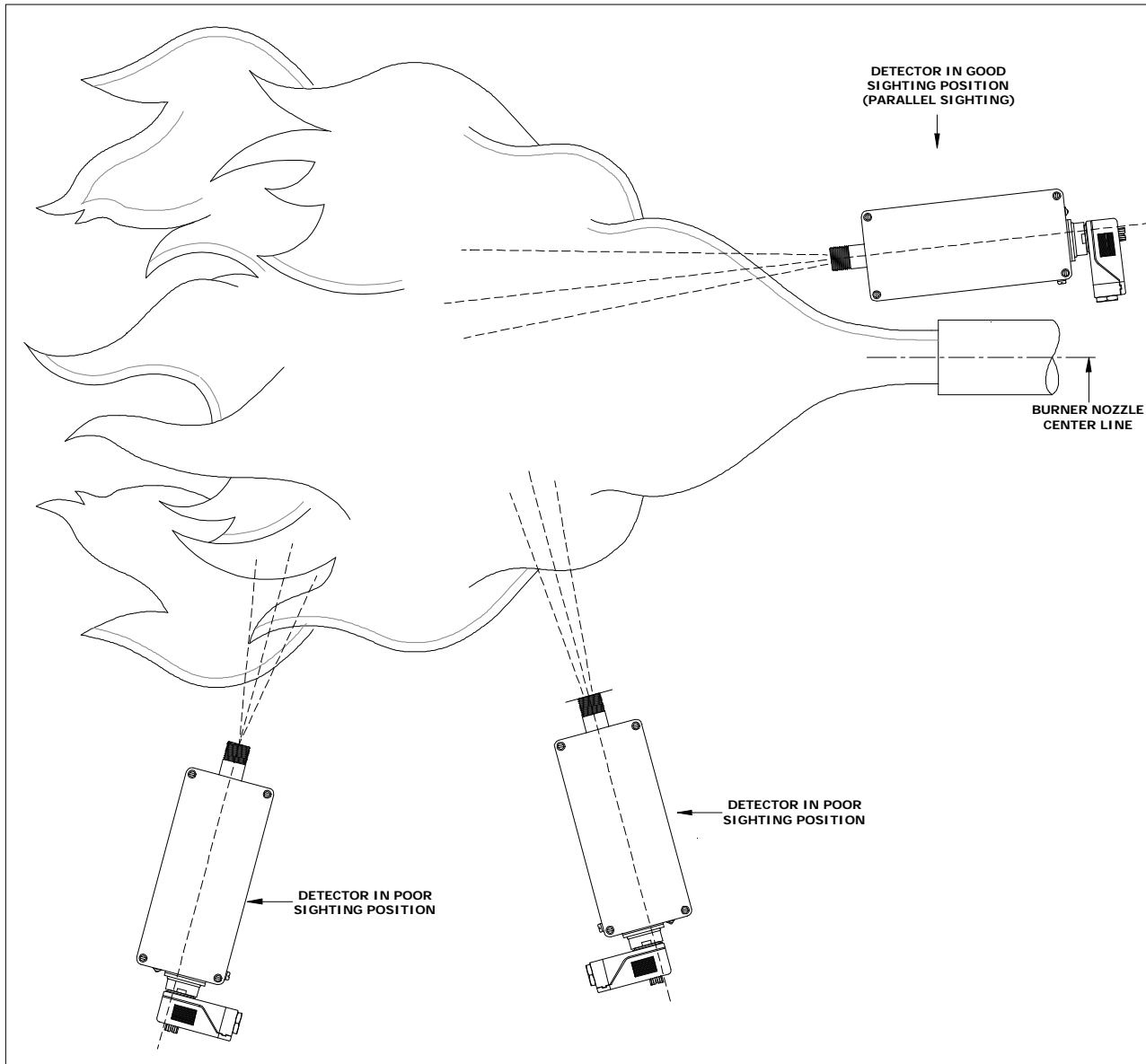


FIG 4: UNISCAN HEAD SIGHTING